

DGMD E599

Capstone Design Studio

December 16 Capstone Project Presentation
Christopher Hansen

Problem: lots of printers, how to maintain?



Standard instructions

SERVICE

Step 2: Remove Top Cover on the Extruder

- a. Cut the filament just before the intake on the top of the extruder.



- b. Remove screw located on the right side hole using the T10 Torx screwdriver. The first picture below shows the location of the screw, the second picture a bottom view of the area where the screw is located, circled in red, is the screw that needs to be removed.



- c. Unscrew the two screws on the top of the filament guide bracket using the 2.5mm Hex wrench.



- d. Remove the top cover.

- e. Carefully unplug filament run out switch from the extruder circuit board, ensuring to pull from the plastic plug and not the wires; pulling the wires can damage the connection to the extruder. Please see picture below.



Step 3: Removing the Extruder Motor

- a. Disconnect the white extruder terminal block from the extruder connector as shown in the picture below. Ensure to grab the block and avoid pinching the wires.



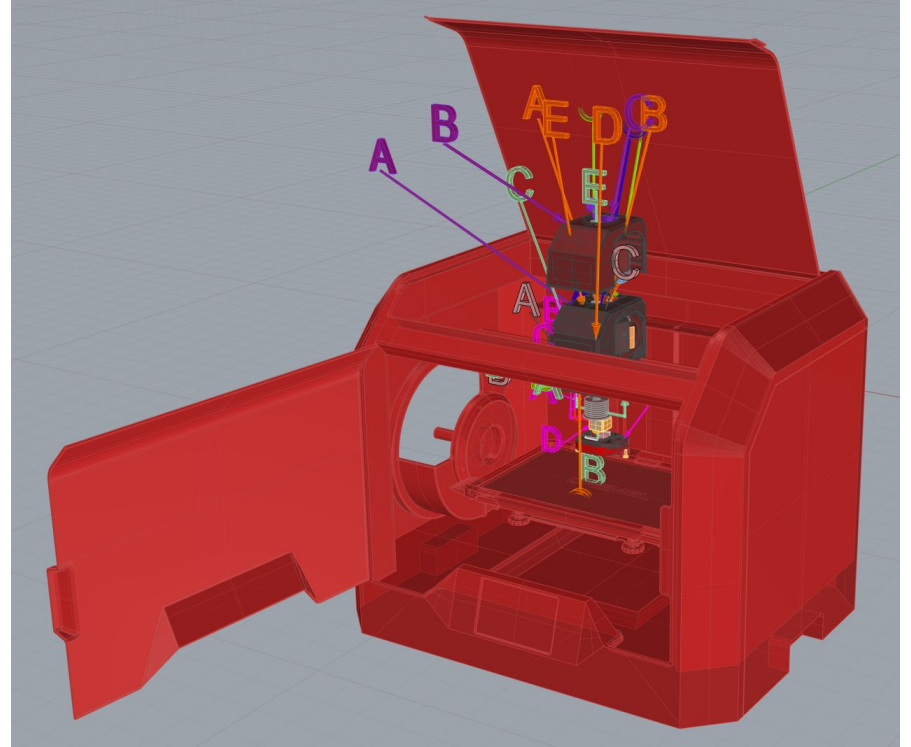
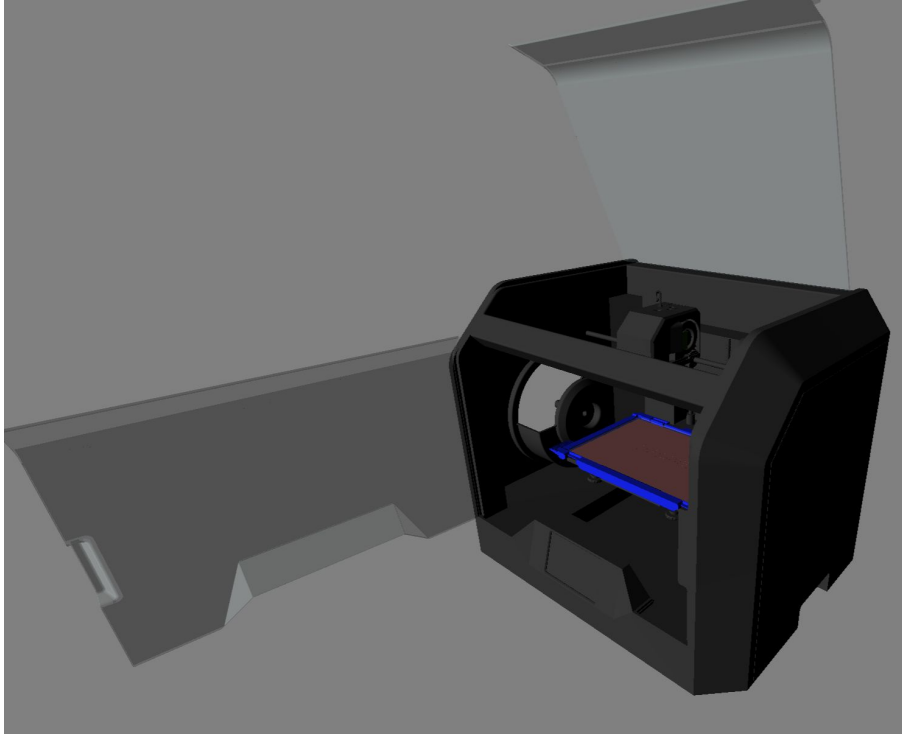
- b. Unscrew the two motor screws below using the 2.5 mm Allen key, as shown in the picture below. Please ensure that the screws once fully unscrewed, should still be left inserted in the extruder chassis hole.



How to improve? Make clearer?

- Contain all information in original instructions
- Easily accessible (web access from any device)
- Interactive
- 1 to 1 representation
- Clear and intuitive for inexperienced

Digital Duplicate



Demo & Questions